

LAND FOR SALE

BURGESS FIELD ROAD

UNIONTOWN, PA 15401

BURGESS FIELD ROAD SITE

SOUTH UNION &
GEORGES TOWNSHIPS
FAYETTE COUNTY, PA



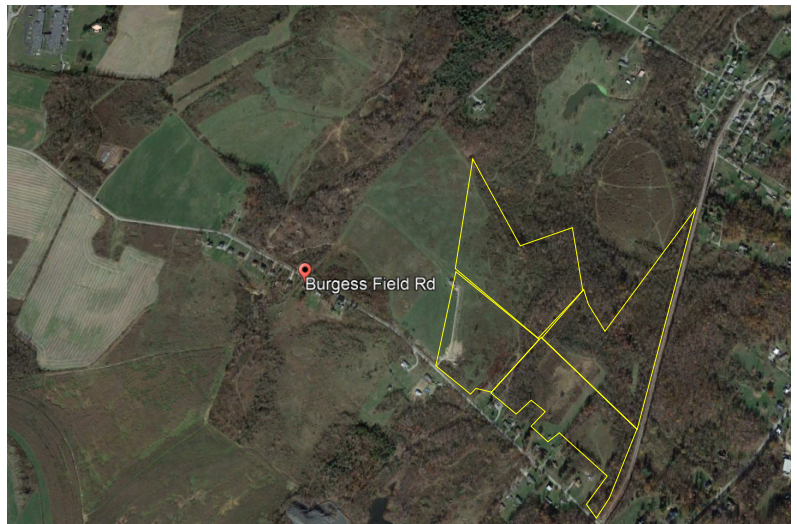
See other side for parcel acreage

PRIME LOCATION FOR INDUSTRIAL & RESIDENTIAL DEVELOPMENT

MINUTES DRIVE TO PA TURNPIKE 43 TOLL ROAD

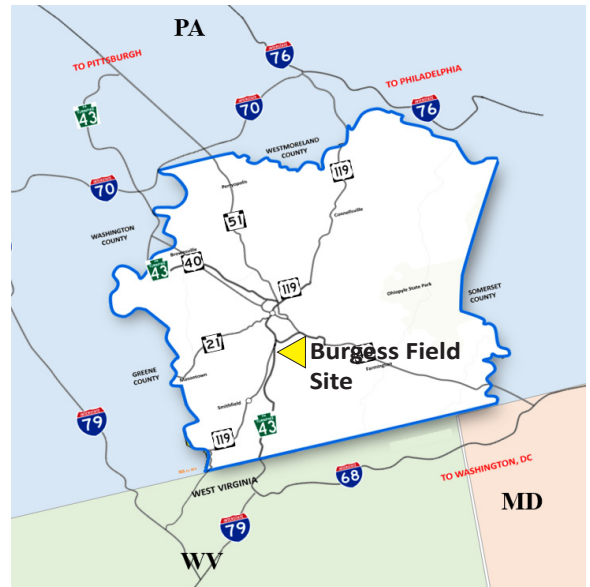
PROPERTY HIGHLIGHTS

- 56+ acre greenfield site
 - 4 parcels ranging from 9 - 17 acres
 - can subdivide
- Borders the Southwest Pennsylvania Railroad
- Build-to-Suit Available
- Easy access to major highways
 - 1 mile to PA Turnpike 43
 - 15 miles from Interstate 68 in WV
 - 33 miles to PA Turnpike (New Stanton Interchange)
- Easily accessible to markets in PA, WV and MD
- Two parcels are designated tax-free Keystone Opportunity Zones (KOZ) thru 2030

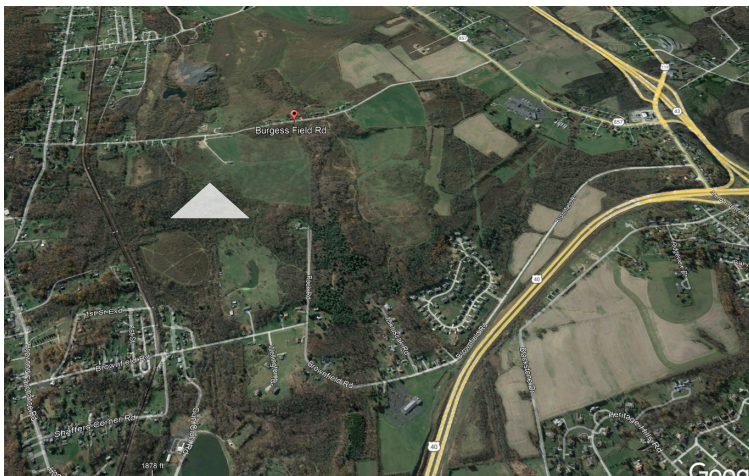


BURGESS FIELD ROAD SITE

UNIONTOWN, PA 15401



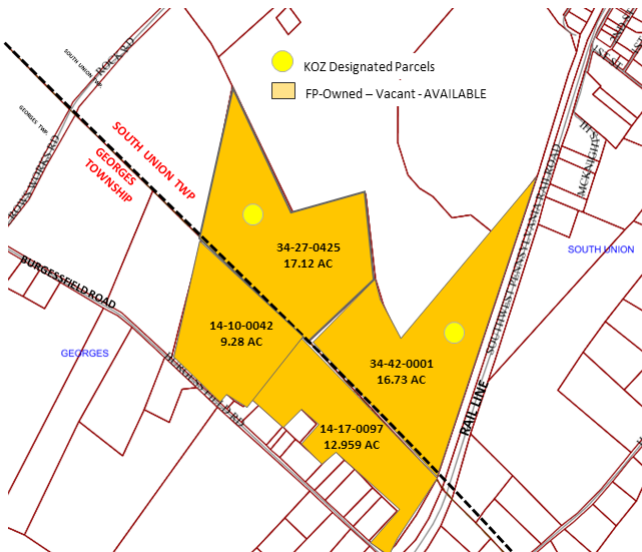
Four (4) Interstate Highways within 30 minutes drive
(from County center)



Within a 500 mile
radius of over half of
the US & Canadian
population



Total Available Acres: 56.089



FAYPENN.ORG

The information contained herein has been obtained from sources believed to be reliable and is subject to change. Fay-Penn makes no guarantee, warranty or representation about information obtained from other sources. Clients and/or their representatives will be responsible for conducting a careful, independent investigation of the property to determine to their satisfaction the suitability of the property for your needs.

Earl Miller
earlm@faypenn.org
724.437.7913 ext. 209

PHONE 724.437.7913 FAX 724.437.7315 INFO@FAYPENN.ORG FAYPENN.ORG
UNIVERSITY BUSINESS PARK . 1040 EBERLY WAY . SUITE 200 . LEMONT FURNACE, PA 15456