

# LAND FOR SALE

# MORGANTOWN RD.

ALONG PA TURNPIKE 43

## WHYEL PROPERTY

GEORGES TOWNSHIP  
FAYETTE COUNTY, PA



## PRIME LOCATION FOR INDUSTRIAL AND COMMERCIAL DEVELOPMENT

16 MINUTE DRIVE TO INTERSTATE 68!

## PROPERTY HIGHLIGHTS

- Approximately 107 Acres - can subdivide
- Build-to-Suit Available
- All utilities on-site or nearby. Infrastructure development planned
- Drive time to nearest major highways:
  - 4 minute drive to PA Turnpike 43
  - 16 minute drive to I68 in WV
- Easily accessible to markets in PA, WV and MD
- Located 2.5 miles off Exit 8 of The Mon-Fayette Expressway (PA Turnpike Route 43)



# MORGANTOWN RD. PROPERTY

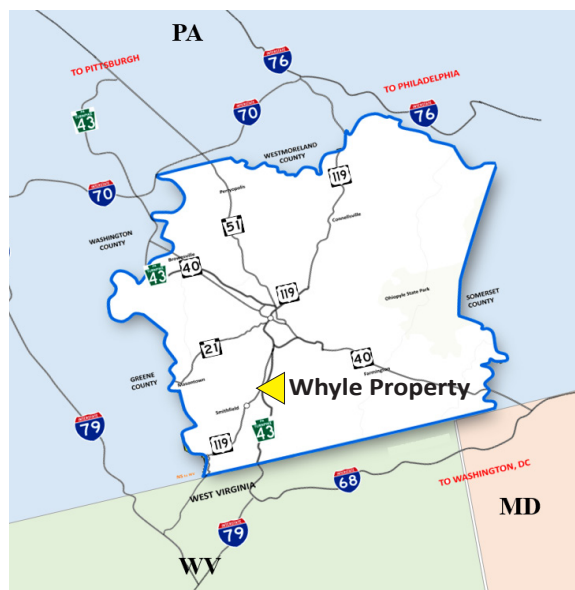
ALONG PA TURNPIKE 48, GEORGES TOWNSHIP



View from PA 43 - Looking South



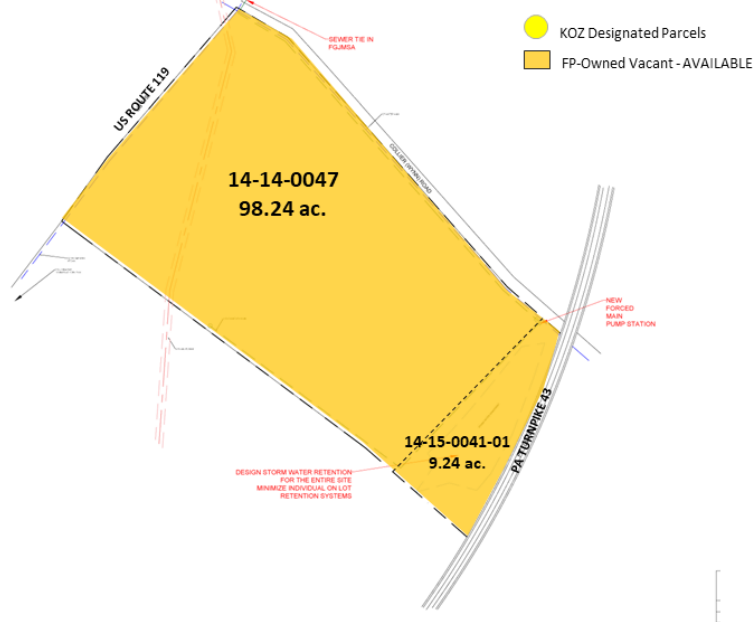
View from PA 43 - Looking North



Four (4) Interstate Highways within 30 minutes drive  
(from County center)

## WHYEL PROPERTY GEORGES TOWNSHIP FAYETTE COUNTY, PA

Total Available Acres: 107.48



Within a 500 mile radius  
of over half of the US &  
Canadian population



## FAYPENN.ORG

The information contained herein has been obtained from sources believed to be reliable and is subject to change. Fay-Penn makes no guarantee, warranty or representation about information obtained from other sources. Clients and/or their representatives will be responsible for conducting a careful, independent investigation of the property to determine to their satisfaction the suitability of the property for your needs.

**Earl Miller**  
earlm@faypenn.org  
724.437.7913 ext. 209

PHONE 724.437.7913 FAX 724.437.7315 INFO@FAYPENN.ORG FAYPENN.ORG  
UNIVERSITY BUSINESS PARK . 1040 EBERLY WAY . SUITE 200 . LEMONT FURNACE, PA 15456